

# LifestyleGarden®

*Sustainable outdoor living*

## OPAL COLLECTION



[www.lifestylegarden.com](http://www.lifestylegarden.com)

# LifestyleGarden®

*Sustainable outdoor living*

At LifestyleGarden® we have a clear purpose – to supply you with sustainable outdoor living products that are harmless to the environment, of high quality, long lasting and bring balance to your life.

We work dedicatedly with the very best designers, materials and production methods in the industry; and every season we add to our portfolio of stunning ranges in sustainable options and with great innovation and style. We believe everyone should have sustainable and circular options for their perfect outdoor space – after all, what is more natural than enjoying outdoors in products that come from nature without hurting it.





## A TRULY SUSTAINABLE PARTNER



### OWN & RESPONSIBLE PRODUCTION

Ensures full control and compliance

Full solution from design to packaging



### SUSTAINABILITY & CIRCULARITY

Proven commitment for a better world

Focus on sustainability and reduction of environmental impact



### HIGH QUALITY LONG LASTING

Premium and responsibly sourced materials

Own unique finishing touches and dedicated quality control



### MIX & MATCH

Fill containers with whatever products you want

Endless combinations throughout our ranges



### MARKETING & SALES SUPPORT

From photo and video to digital content

We offer all the tools you need, ready to use



### DESIGN & INNOVATION

Experienced international team with wide knowledge

Innovative solutions and sustainable options internationally awarded



# DESIGN AS A CORNERSTONE OF WHAT WE DO

At LifestyleGarden®, we have a team of dedicated designers that constantly try to envision and design the very best sustainable outdoor living experiences for you.

From the concept to the final product, our brilliant team create pieces of furniture that reflects passion for design, sustainable materials and innovation. Meet the people behind our beautiful pieces.

INBAL KAHANER



BØJE BENDTZEN



RUNE SCHWEEN



QUIQUE SANCHIS



ALEX CHRISTENSEN



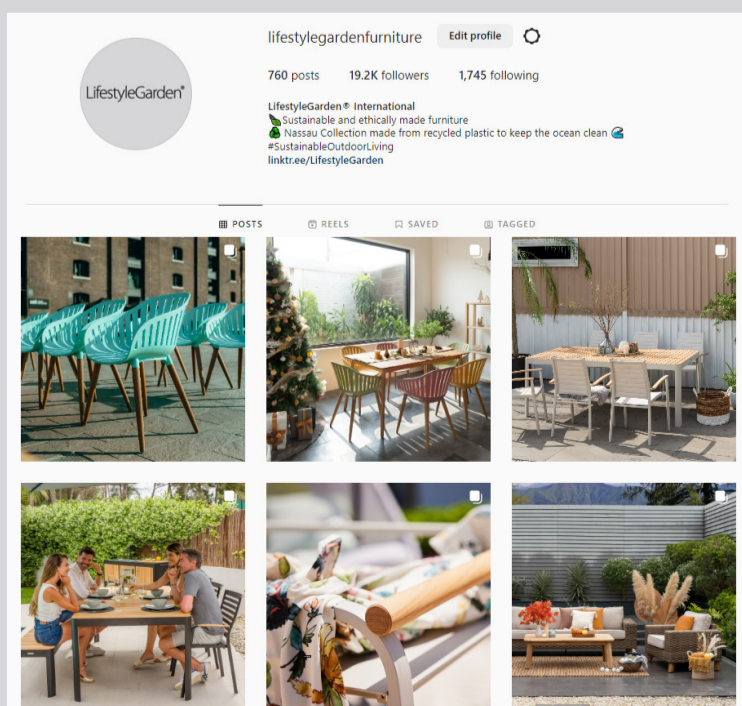
SAYS WHO



## MORE SOCIAL AND DIGITAL

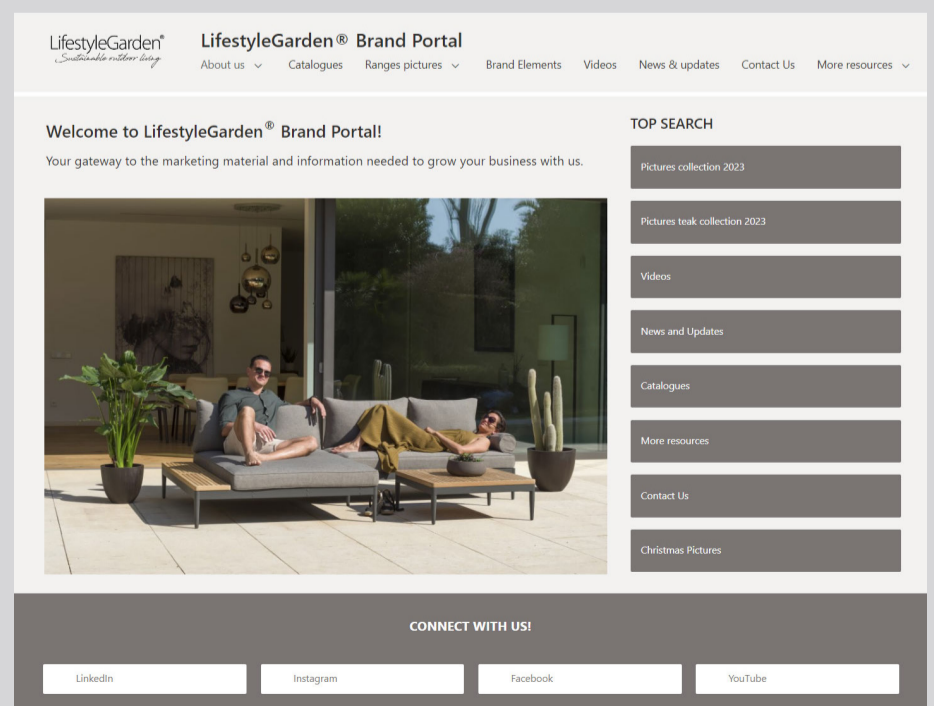
### FOLLOW US ON SOCIAL MEDIA!

Our Social Media platforms allow you to connect with us and the end consumers and be updated on our latest activities: Instagram, Facebook and YouTube channels.



### VISIT OUR BRAND PORTAL

Our new B2B tool is your gateway to the marketing material and information needed to grow your business with us: pictures, catalogues, videos as well as news and technical specifications



# SUSTAINABLE OUTDOOR LIVING

It is with great pleasure that we can present you with the 2024 LifestyleGarden® Lookbook – a collection showcasing the pinnacle of furniture for Sustainable Outdoor Living.

This season, we are 'going back to our core' and focusing on our key strengths, with a special attention on aluminium designs that incorporate our core sustainable materials such as the unique FSC™ DuraBoard® table tops and recycled plastic.

For our 2024 ranges, the team has worked hard on designing and crafting ranges that are more versatile and complete family options – whether you are looking for dining, lounging or both – while at the same time concentrating on delivering excellent colour options and updates. We now focus on three core colours across our new and existing ranges, allowing you the flexibility to mix and match more easily, even across ranges. The result: more than 300 different configuration options, right at the tip of your fingers!

In these pages, you will experience the very best in terms of high quality and sustainable materials, designs, versatility and flexibility for outdoor furniture setups, with inspiration for any type and size of space. Our global team has put their heart and soul into this Lookbook, and the photographs here capture our vision and trends for the coming season.

Immerse yourself in Sustainable Outdoor Living and enjoy.





# OPAL

The Opal range offers a full package of stylish, premium furniture, with no compromise taken on its flexibility.

High pressure laminate tables paired with aluminium frames allows for a robust and stylish addition to any garden. By finishing the dining range with our Olefin rope, alongside reclining seating on the sofa sets, this range is perfect for creating a cozy area of relaxation in your ideal outdoor space.

























# LifestyleGarden®

*Sustainable outdoor living*



[www.lifestylegarden.com](http://www.lifestylegarden.com)

[facebook.com/lifestylegardenfurniture](https://www.facebook.com/lifestylegardenfurniture)

[@instagram.com/lifestylegardenfurniture](https://www.instagram.com/lifestylegardenfurniture)

[youtube.com/lifestylegardenfurniture](https://www.youtube.com/lifestylegardenfurniture)